

Welcome To Pinnacles National Monument

National monuments are among the most sensitive and protected natural areas in America. Your cooperation is needed to help preserve Pinnacles as a national treasure. The Access Fund, Friends Of Pinnacles and the National Park Service urge you to climb safely and "Leave No Trace" -- at Pinnacles and in all other climbing areas in our National Park System.

Conservation Promotes Access

Climbing in the United States is an increasingly popular activity. Most climbers support "minimum impact climbing practices." However, over time climbers have made a noticeable impact on many areas at Pinnacles. Current problems associated with climbing and hiking at Pinnacles include soil erosion, trail degradation, damage to trees, bushes and rock flora (lichens etc.), litter, human waste, and indiscriminate use of fixed anchors. Climbers should set an example for all user groups by working to reduce or eliminate environmental impacts.

Climbers historically have enjoyed the privilege of widespread access to public lands and few restrictions on our activities. That's been especially true at Pinnacles. We'd like to keep it that way -- and you can help. To ensure the future of open access to Pinnacles, minimal regulation, and a healthy Pinnacles environment, each climber must do everything he or she can to prevent or reduce impact...TODAY!

What You Can Do

The Access Fund and Friends Of Pinnacles recommend that all climbers follow the guidelines offered in this brochure, to reduce impact and help support climbing in our National Parks.

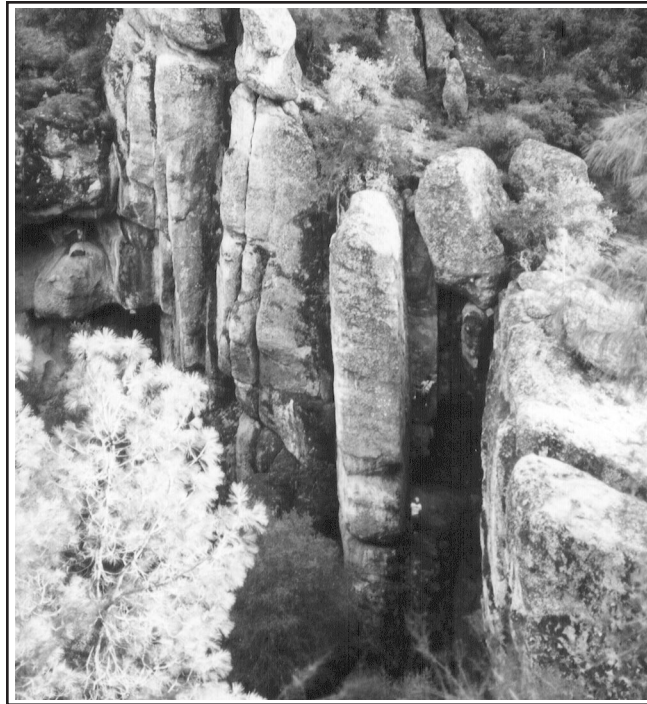
When you're not climbing, try organizing or taking part in clean-ups, NPS supervised trail rehabilitation and construction and other projects which help keep Pinnacles beautiful. Get involved with development of climbing management plans and policies. For more information on how you can support climbing in the monument write to The Access Fund or Friends Of Pinnacles.

Friends Of Pinnacles is a climber-based organization dedicated to working with the Park Service to promote environmentally sound climbing practices, to ensure appropriate access and preserve park resources for future generations.

To join Friends Of Pinnacles, or for more information, write or call:

Friends Of Pinnacles
122 Parnel Ave.
Santa Cruz CA. 95062
(408) 427-0740

As a Friends Of Pinnacles Member, you will receive a quarterly newsletter and information on activities and meetings.



Climbers on Jim Bridwell's "No Holds Barred"
- The Guardian -

Guidelines For Climbing In The Park

Proper Disposal Of Human Waste

- Use toilets when available. (Toilets are located at both trail heads and at the Scout Peak Junction in the High Peaks).
- Don't leave human waste within 50 meters of any water source or at the base of the cliff.
- Bury feces at least 6" (1/6 meter) below the soil surface.
- Always pack out used toilet paper (do not bury or burn it).

Pinnacles Is An Extremely Environmentally Sensitive Park

Pinnacles soil is very fragile and new paths form with a single crossing:

- Stay on climber access trails where present (designated by a sign showing a locking carabiner).
- Avoid travelling cross-country whenever possible, and don't cut across switchbacks.
- Remember that you may create the worst damage to soil and vegetation on your way to or from a climb. Even when you're eager to get there, or tired and heading home, avoid steep slopes with loose soils, stay on solid rock whenever possible, be aware of your surroundings and respect the wilderness you're passing through.

Observe All Closures And Regulations

- Pinnacles' park management closes some areas temporarily or seasonally to protect nesting raptors' habitats, protect hikers passing below trailside routes, or allow overused areas to recover from erosion. Check the climbers' bulletin board at the West or East side trailheads for current information about closures (and reopenings) and the latest climbing management policies.
- Be aware that motorized drills are always illegal in the monument.

Climbing Practices

- Don't sculpt, chisel, glue holds onto, or otherwise deface the rock.
- Don't scrub streaks of lichen. Clean only individual holds.
- Adopt a minimum impact frame of mind concerning climbing.
- Establish NO new routes over trails.
- Do not stage or belay from park trails unless the trail is a designated climber access trail.
- Use natural colored fixed anchors (i.e. bolt hangers) which blend with the rock.
- If you must leave slings at rappel stations or "back off gear," use camouflaged (rock-colored) webbing.
- There's lots of great climbing at Pinnacles -- Think carefully about what a new route would add to Pinnacles' climbing and to the monument. Set aside your own personal gratification ... is the route still a significant positive addition? If it would involve bolts, would it be worth permanently altering the rock? If not, don't put up the route.

Safety - Climbing At Pinnacles Is Uniquely Dangerous

- Nuts and camming devices can pull out of the comparatively soft Pinnacles rock. On any climb where self-placed protection is required, expert skills are mandatory, regardless of the rating. You cannot place too much protection.
- Many climbs, especially older ones, have significant run-outs. Climb with fanatical caution. You can always tell a long-time Pinnacles climber by the curious way they tap the holds. The sound of that tap can tell everything about the permanence of the hold.

- As you venture onto the less-travelled routes outside popular areas like Bear Gulch, Discovery Wall, or the High Peaks, be prepared for greater risks. The rock is less likely to be trustworthy and the route data less accurate. You may also face bad or no protection bolts and bad anchors.
- Bolt placements on a number of routes can unknowingly put you in danger of a groundfall. Be aware of this potential when pulling up the rope to clip into the second bolt.
- Don't take bolts for granted. They are not necessarily "bomb proof" protection. Always examine the state of any bolt.
- The rock is LOOSE. Debris constantly is falling from the gravelly cliff tops. Always yell "ROCK!" if you dislodge something and be aware of people above you when on the ground.

Chalk / Tips To Reduce Chalk's Use And Impact

- Chalk creates a visual impact at the Pinnacles that causes many complaints. Chalk marks and bolts can mark the passage of climbers in ways hikers and other visitors can't help but notice. Because the rain is infrequent and may not wash all the chalk off when it does come, it is important to use as little chalk as possible when climbing here. Some suggestions:
- Don't use chalk at all. On long easier routes there is enough dust and dirt to do the same job as chalk.
- Try using chalk contained in a mesh bag. You will use less chalk and not spill it as often.
- Try some of the other chalk substitutes.
- On harder routes, don't mark the holds with chalk. Use visualization instead to remember which holds you want to use (work out the sequence in your head).
- Pick up any large pieces of spilled chalk and brush away the dust.

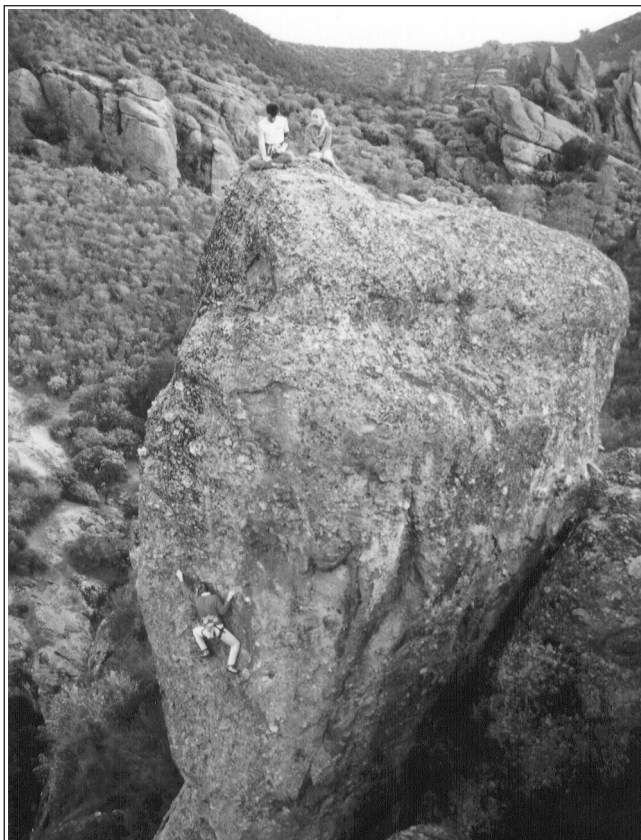
Helpful Information

Services

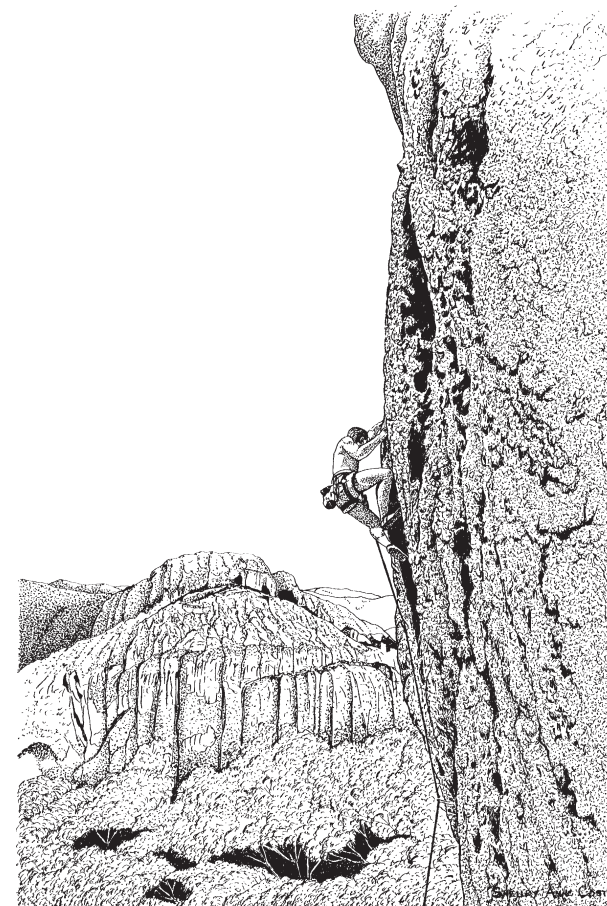
- There is limited camping inside the park on the West Side. These campgrounds are closed during spring weekends. Check with the Park Service to determine the current status of the campground.
- There is a privately owned campground just outside the entrance on the East Side. The campground has a small store, showers and a swimming pool.

Climbing Season

- Pinnacles is an excellent fall, winter and spring climbing area, often remaining dry when everywhere else is wet. Year-round climbing is available, but the summer months can be sweltering. Bring extra water during the hot days. There are NO water facilities on the trails.



Climbers on Mike Harrington's "Ali Baba".
- The Camel -



Climbing At Pinnacles National Monument



Credits:

- Written and Published by Friends Of Pinnacles
- Design and Layout by Brooks White
- Printed on Recycled Paper by Brian Cohen - PIP Printing, Cupertino
- Special thanks to the National Park Service
- Publication of this brochure made possible by Friends Of Pinnacles members and a grant from The Access Fund



Provided to you by Friends Of Pinnacles

"Dedicated to the preservation of the natural resources at Pinnacles National Monument and climbers' access to those resources."